



*“Inspiring a love of lifelong learning”*

*VbE Enhanced Quality Mark*

The Trustees/Governors of Charville Academy are seeking additional Members to join the existing Members Board.

### **The Academy**

Charville Academy, converted to a single academy trust in 2013. Located in Hayes, Middlesex, the school offers primary education for 500 pupils. The academy aims to provide a rich, stimulating experience for all our children, enabling them to develop academically, spiritually and socially. Everyone is encouraged to take an active role in the life of the school and follow the values based approach to education. The academy is supported by a strong, stable and proactive board of trustees whose role is three fold: trustees of the charitable trust, governors of the school and directors of the company

### **The Role of the Member**

The role of the Member is high level and is voluntary. Members are expected to demonstrate the Nolan principles of public life: selflessness, integrity, objectivity, accountability, openness, honesty, and leadership.

The overarching role of the Member is to:

- Provide oversight and scrutiny of the work of the trustees.
- Ensure accountability for the decision-making and strategy of the trust.
- Be the top tier of governance and hold the trustees to account for the governance of the school.
- Appoint the trustees.

Members will judge success against how much the trustees are doing to achieve the charitable objectives of the charity, and will ensure the success of the trust by focussing on outcomes for pupils, financial oversight and by safeguarding publicly funded resources.

### **Time Commitment**

The Members typically meet once a year at the trust's annual general meeting (AGM). Other meetings can be arranged as required. At the AGM meeting, Members:

- Receive the trust's accounts
- Receive any relevant reports
- Take an overview of the governance and operations throughout the year

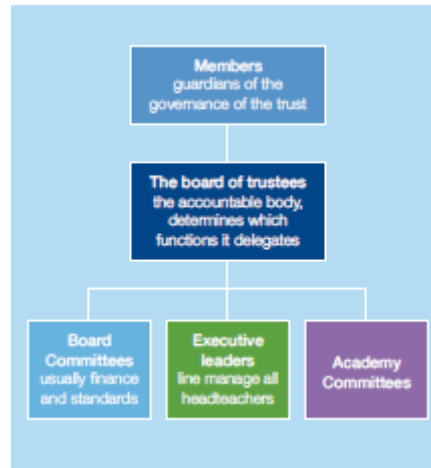
Members do not undertake a trustee role, nor do they assume the powers of a trustee, but hold the trustees to account. They are not involved in the day to day running of the academy.

### **Personal Specification**

The key competencies required are the ability to take a strategic view of the trust, the board and act in the long-term interest of the pupils. Members should have outstanding understanding of the role of governance in public life. This may have been gained in a wide

range of senior leadership roles. They are likely to have previous experience in a non-executive director or trustee role.

The diagram below shows the governance structure



### Contact

We will welcome your interest in this opportunity. Please contact Catherine Kellow McGee, Clerk to the Governing Board/Secretary to the Academy Trust to apply to be a Member of the Academy Trust, or for further information.

email: [clerktothegovernors@charvilleacademy.org](mailto:clerktothegovernors@charvilleacademy.org)