

Areas to investigate

KS2 progress

- Writing progress was in the top quintile (20%) for at least two years for disadvantaged pupils.
- Reading progress was in the bottom quintile (20%) for at least two years for high prior attainers.

KS2 attainment

- In 2018, writing attainment of the expected standard was at or above national for groups: middle prior attainment and disadvantaged.
- In 2018, mathematics attainment of the expected standard was at or above national for the middle prior attainment group.

KS1 attainment

- There were no meaningful trends or differences for this measure.

Phonics in 2018

- There were no meaningful trends or differences for this measure.

Behaviour

- There were no permanent exclusions in the last three years. The national average in each of these years was zero.
- In 2016/17, there were no fixed term exclusions. The national average rate for schools with a similar level of deprivation was 0.70%. In 2016/17, there were no repeat exclusions. The national average rate for schools with a similar level of deprivation was 0.33%.

Primary school context in 2018

Phase of education: Primary	Local authority: Hounslow	Ever 6 FSM %: 33.2
Headteacher: Jo Bloggs	Admissions policy: Not applicable	English additional language %: 48.4
Pupils: 201	Ages: 3-11	SEN support %: 11.4
Gender: Mixed	Denomination: Does not apply	SEN with EHC plan %: 0.5
Deprivation Quintile: Highest 40% (0.2)	Special needs provision:	

Ethnicity

- The largest ethnic groups are: White - British (32.9%), White - any other White background (18.6%), Mixed - White & Black Caribbean (5.6%), Black or Black British - African (9.9%), Any other ethnic group (11.8%).
- This school has 14 out of 17 possible ethnic groups. The average number of groups for this phase of education is 9.

Number on roll

- There was nothing significant to report.

Girls

- The percentage of girls in year 1 (65%) was higher than all other year groups.

- The percentage of girls in year 3 (43%) and year 6 (40%) was lower than all other year groups.

Disadvantaged

- The percentage of FSM in year 6 (52%) was higher than all other year groups.
- The percentage of FSM in year 4 (29%) was lower than all other year groups.
- There were no children looked after in the school.

Primary school context 2018

English as an Additional Language

- The school was in the top 20% of all schools for the proportion of EAL (48.4%).
- The percentage of EAL in year 5 (62%) was higher than all other year groups.
- The percentage of EAL in year 4 (36%) was lower than all other year groups.
- There was a larger than average decrease in the percentage of EAL pupils between 2017 and 2018.

Special Educational Needs

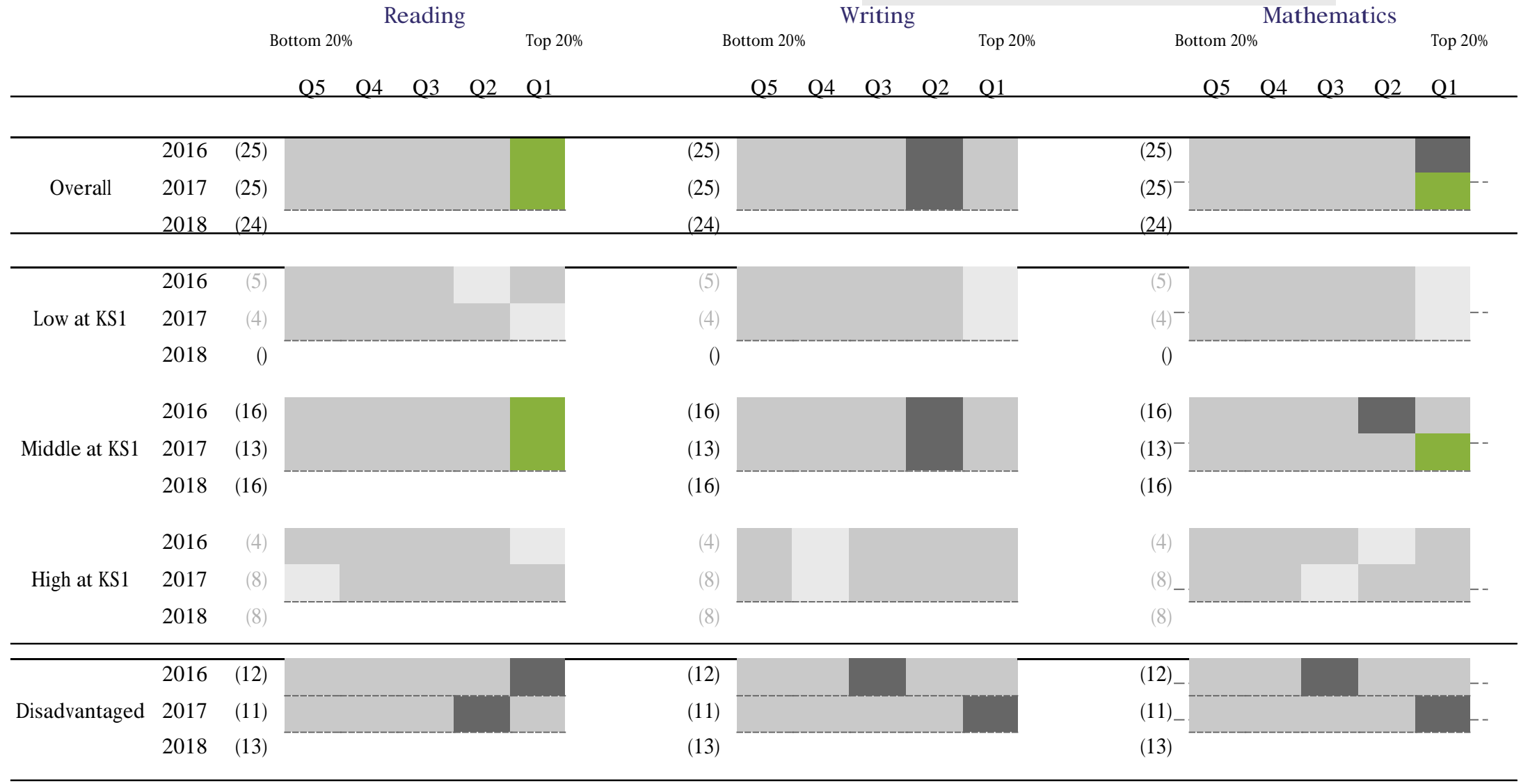
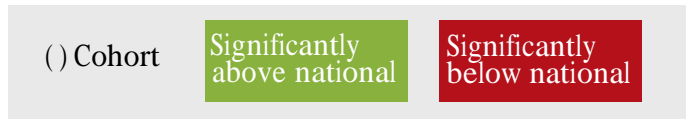
- There was nothing significant to report for this group.

Prior Attainment

- There was nothing significant to report for this group.

Relative progress for the past three years

Progress quintiles based on rank of progress score



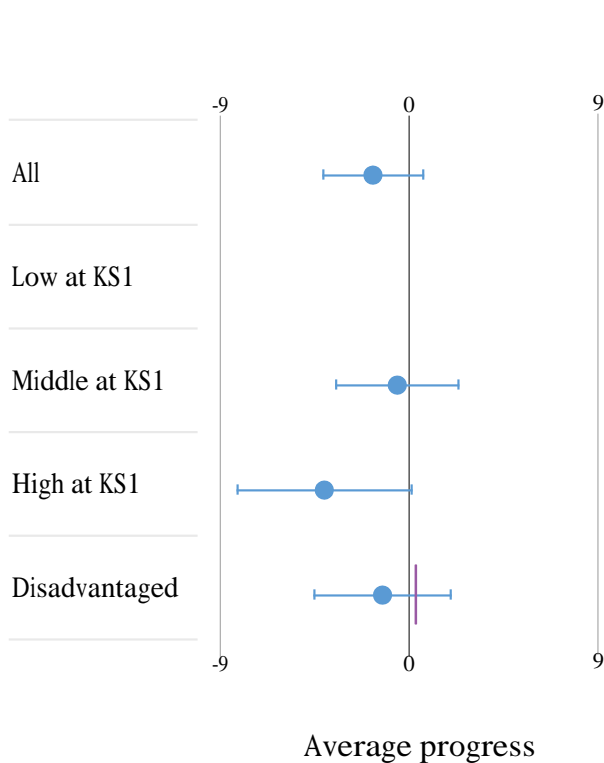
Notes: Statistical significance for disadvantaged pupils is against the national for other pupils. Change in methodology or calculations is indicated by a dotted line. Quintiles for 2018 are based on adjusted progress scores. Previous years are based on unadjusted. Significance is only flagged for cohorts greater than 10. For cohorts of 10 or fewer, information is greyed out. For further information on methodology see www.gov.uk/government/collections/using-ofsteds-inspection-dashboard

Reading progress in 2018

Reading progress scatterplot

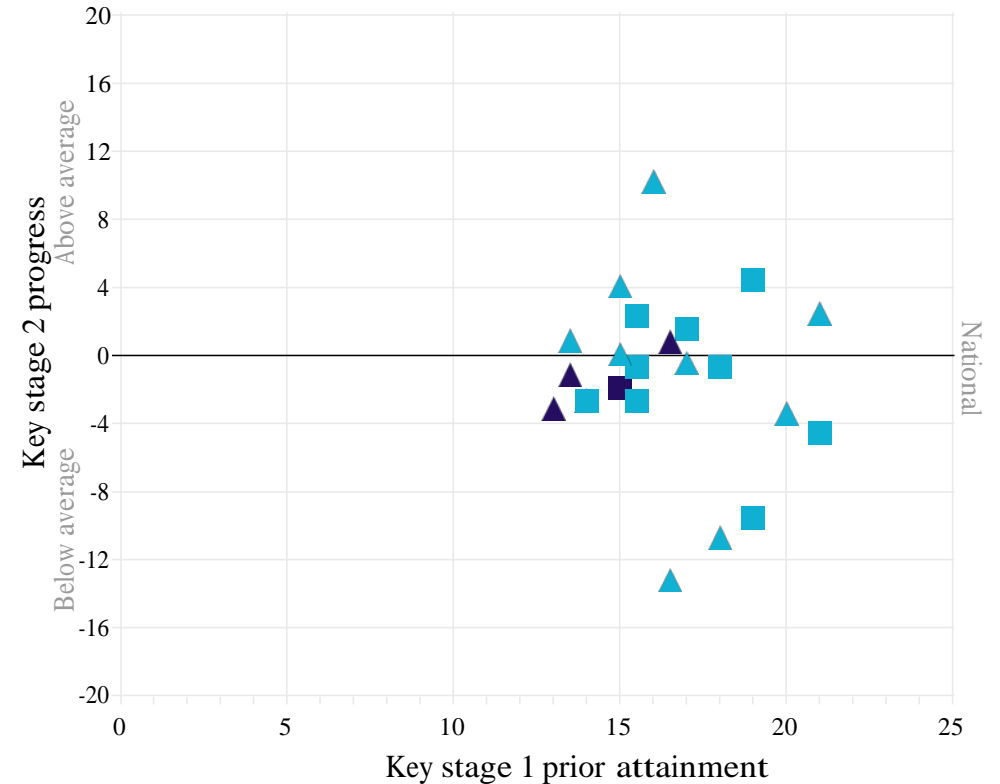
--- Bottom 10%
 --- Top 10%
 --- Other national
 Significantly above national and in top 10%
 Significantly below national and in bottom 10%

△ Disadvantaged
 □ Other
 SEN
 Not SEN



Progress	National	Number of pupils included	Number of adjusted pupils
-1.7	0.0	24	0
-	0.0	0	0
-0.5	0.0	16	0
-4.0	0.0	8	0
-1.3	0.0/0.3	13	0

Note: Disadvantaged nationals are shown as all/other



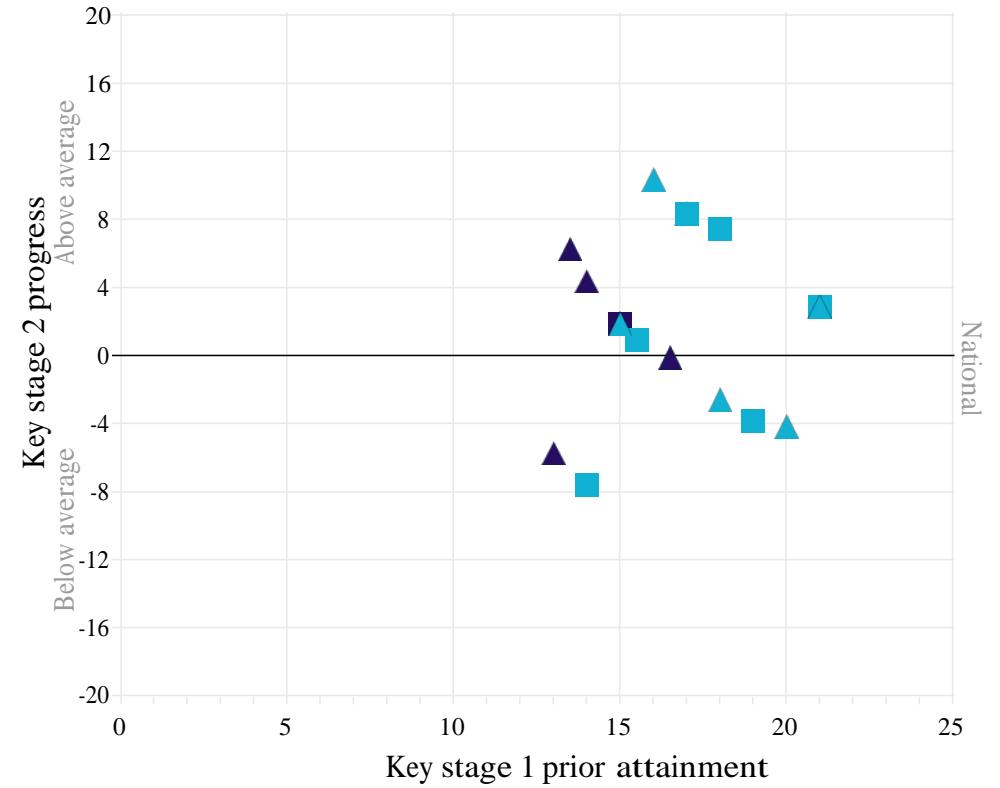
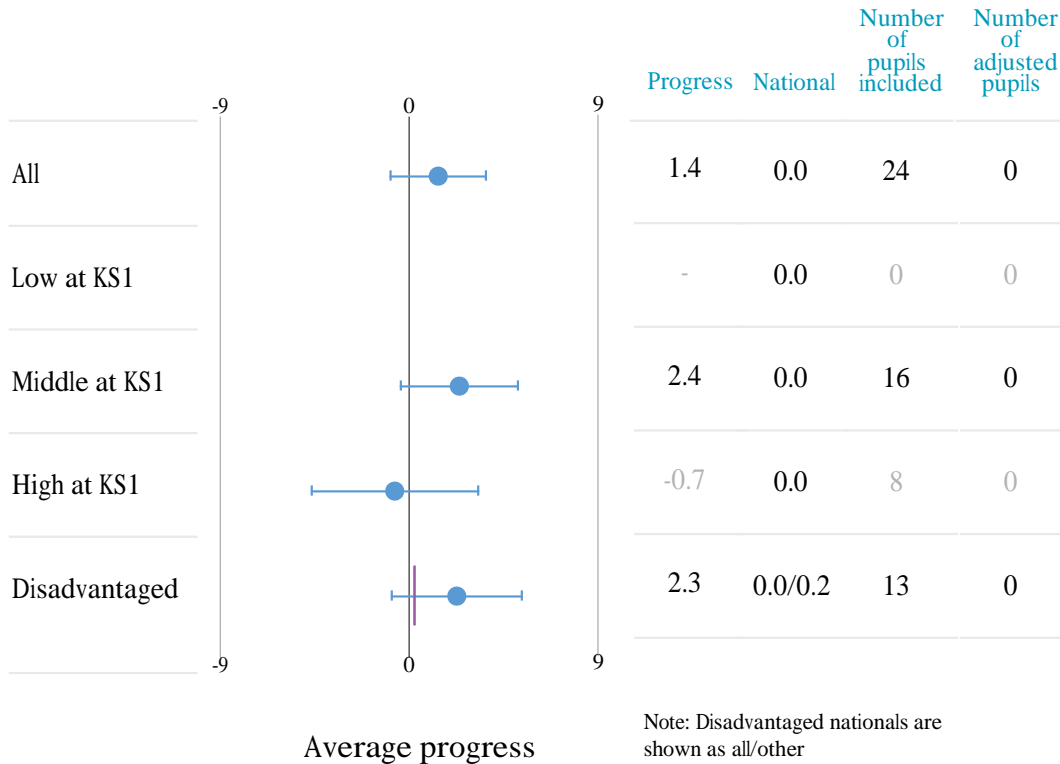
Notes: Progress measures are based on adjusted progress scores. Significance is only flagged for cohorts greater than 10. For cohorts of 10 or fewer, information is shown in grey. Prior attainment is based on overall KS1 attainment. For further information on methodology see www.gov.uk/government/collections/using-ofsted-inspection-dashboard

Writing progress in 2018

Writing progress scatterplot

--- Bottom 10%
 --- Top 10%
 --- Other national
 Significantly above national and in top 10%
 Significantly below national and in bottom 10%

 Disadvantaged
 Other
 SEN
 Not SEN



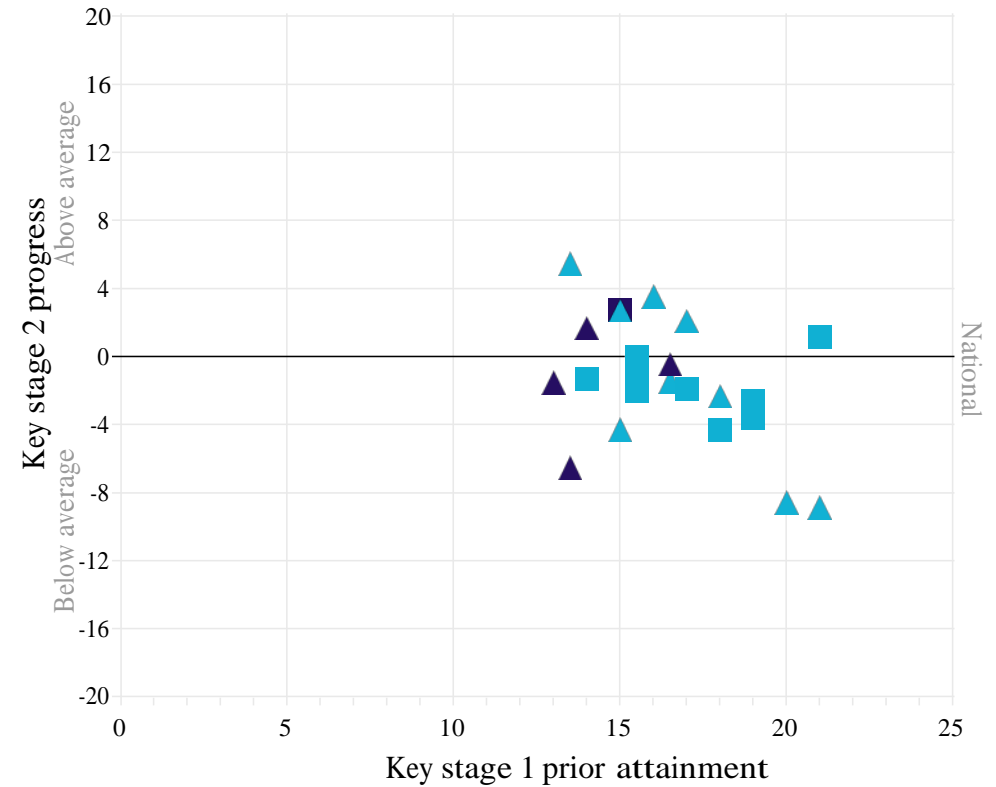
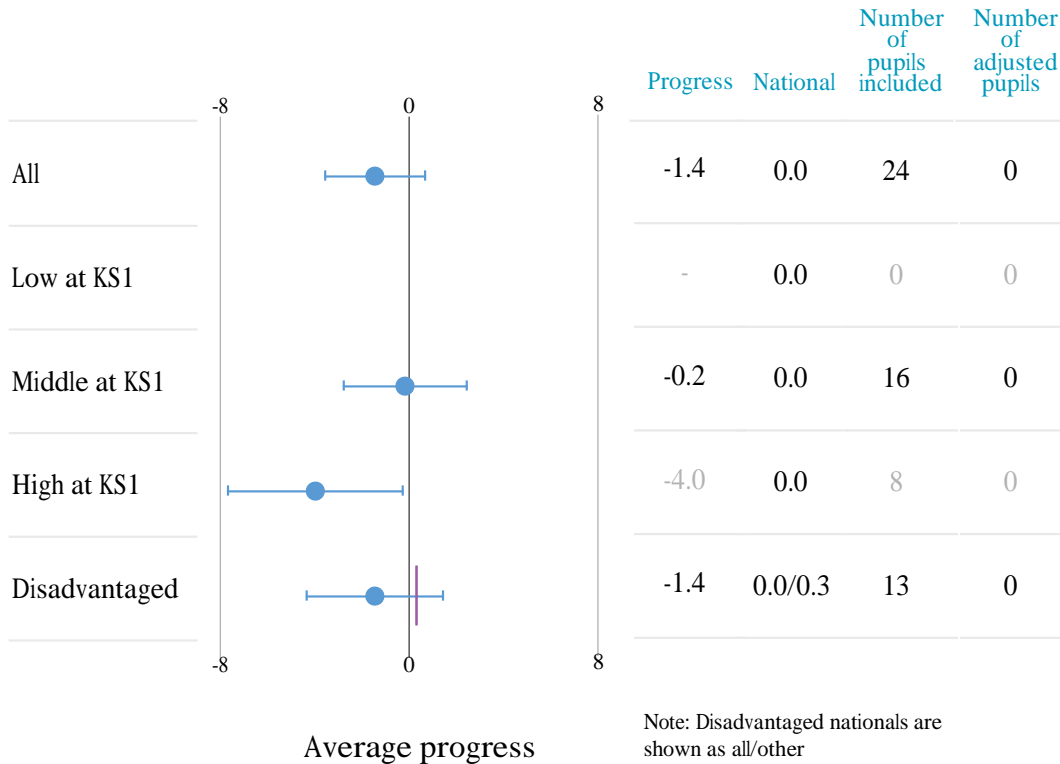
Notes: Progress measures are based on adjusted progress scores. Significance is only flagged for cohorts greater than 10. For cohorts of 10 or fewer, information is shown in grey. Prior attainment is based on overall KS1 attainment. For further information on methodology see www.gov.uk/government/collections/using-ofsted-inspection-dashboard

Mathematics progress in 2018

Mathematics progress scatterplot

--- Bottom 10%
 --- Top 10%
 --- Other national
 Significantly above national and in top 10%
 Significantly below national and in bottom 10%

 Disadvantaged
 Other
 SEN
 Not SEN



Notes: Progress measures are based on adjusted progress scores. Significance is only flagged for cohorts greater than 10. For cohorts of 10 or fewer, information is shown in grey. Prior attainment is based on overall KS1 attainment. For further information on methodology see www.gov.uk/government/collections/using-ofsted-inspection-dashboard

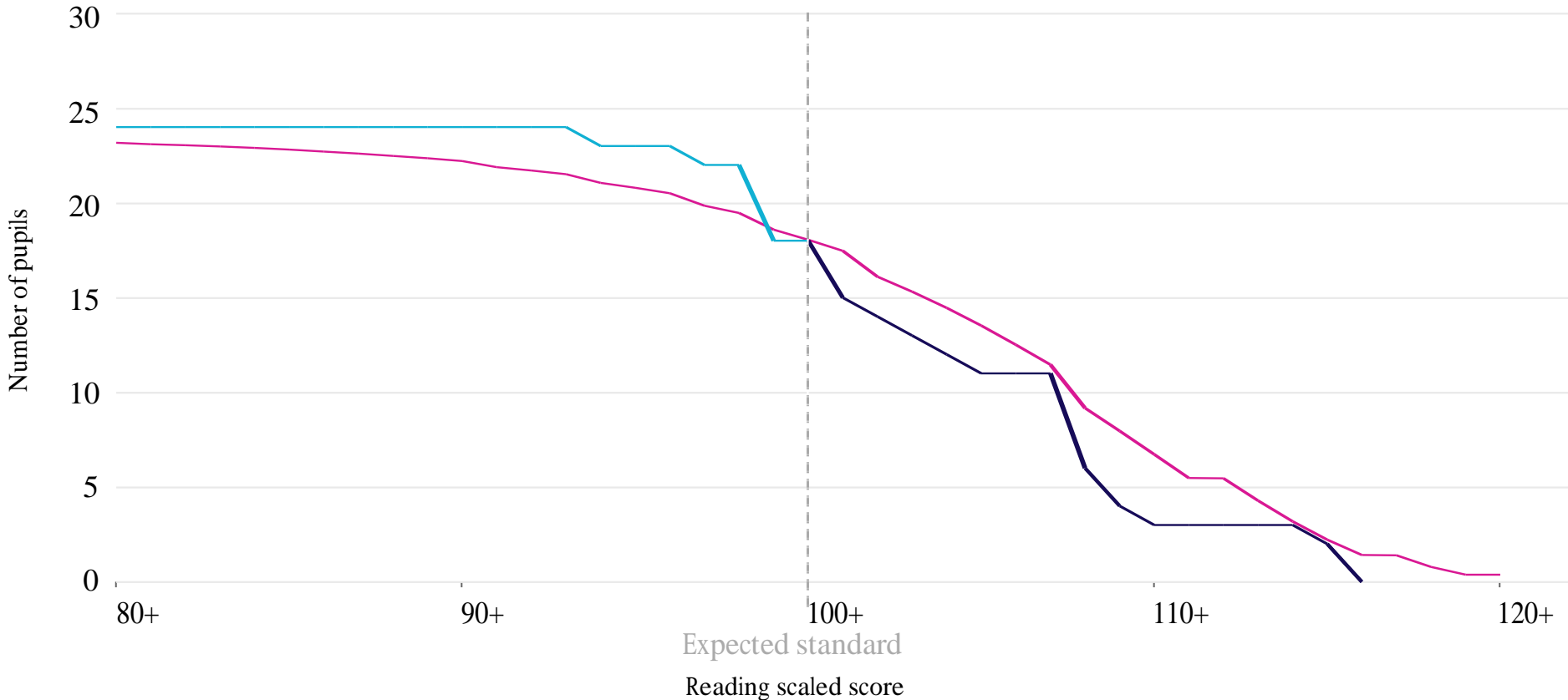
Reading scaled scores 2018

This chart shows the distribution of total marks achieved by pupils in the school compared to the national.

— National level
 — Not achieved expected standard
 — Achieved expected standard

Cohort = 24 One pupil relates to 4.2 percentage points.

In 2018, 75% of pupils achieved the expected standard, in line with the national.



Notes: The plotted national line is the national reading percentage multiplied by the school reading attainment cohort at each average scaled score interval. For further information on methodology see www.gov.uk/government/collections/using-ofsted-inspection-dashboard

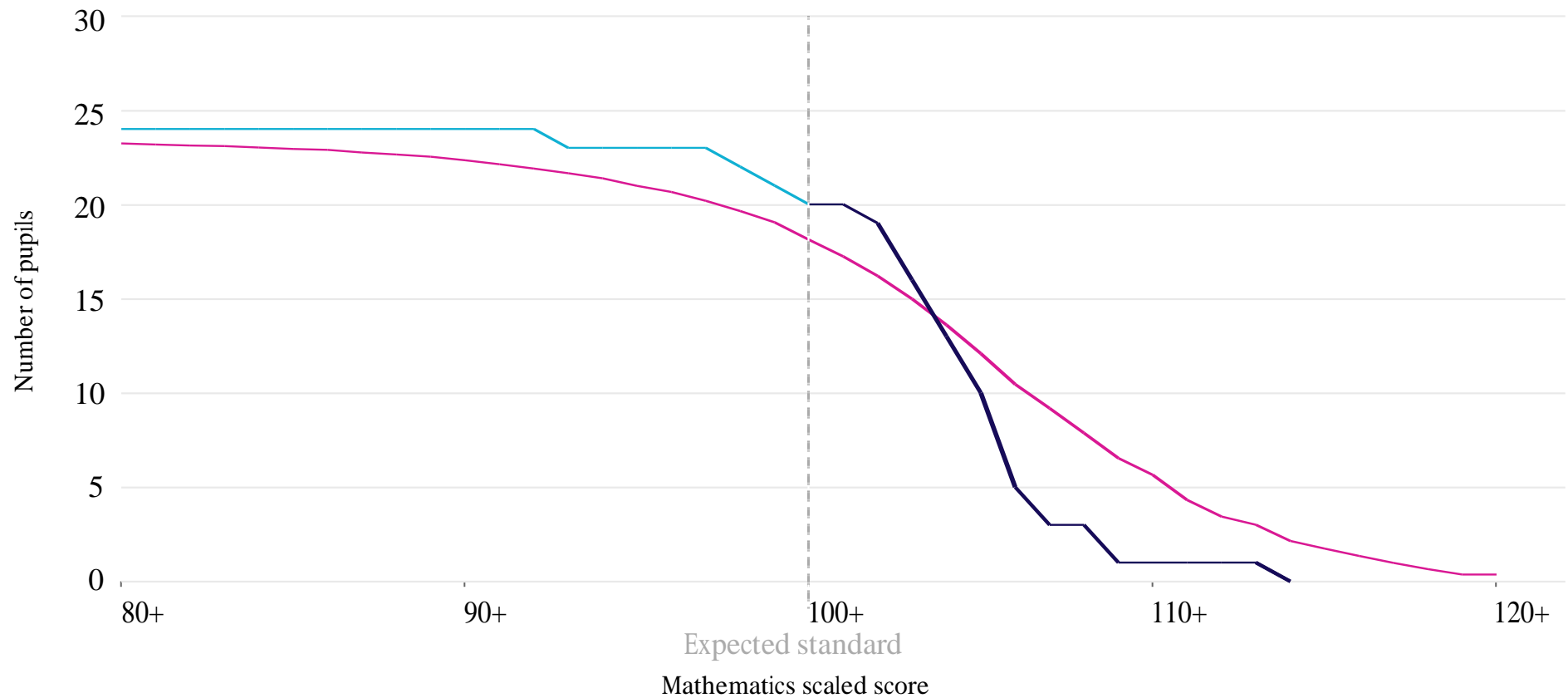
Mathematics scaled scores 2018

This chart shows the distribution of total marks achieved by pupils in the school compared to the national.

— National level — Not achieved expected standard — Achieved expected standard

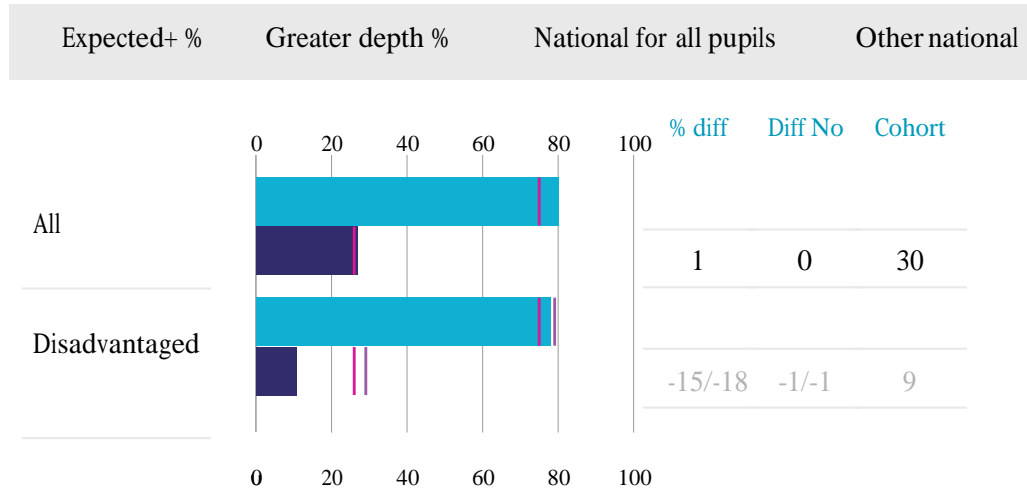
Cohort = 24 One pupil relates to 4.2 percentage points.

In 2018, 83% of pupils achieved the expected standard, 8 percentage points above the national. This difference was not statistically significant.

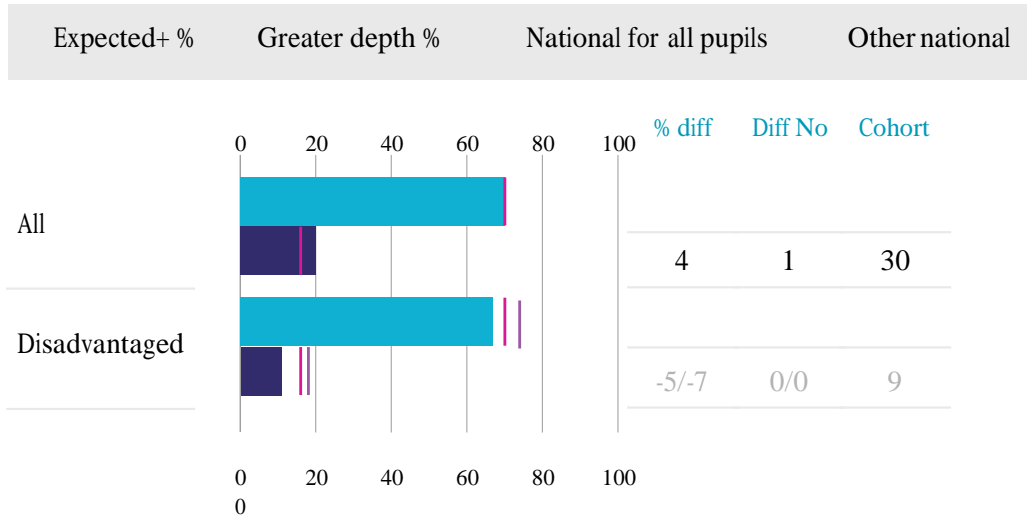


Notes: The plotted national line is the national mathematics percentage multiplied by the school mathematics attainment cohort at each average scaled score interval. For further information on methodology see www.gov.uk/government/collections/using-ofsteds-inspection-dashboard

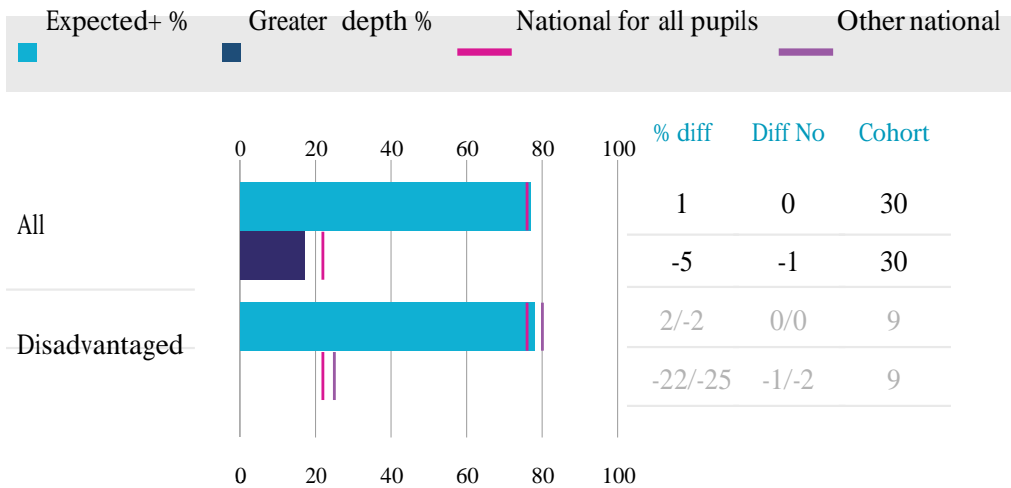
Reading



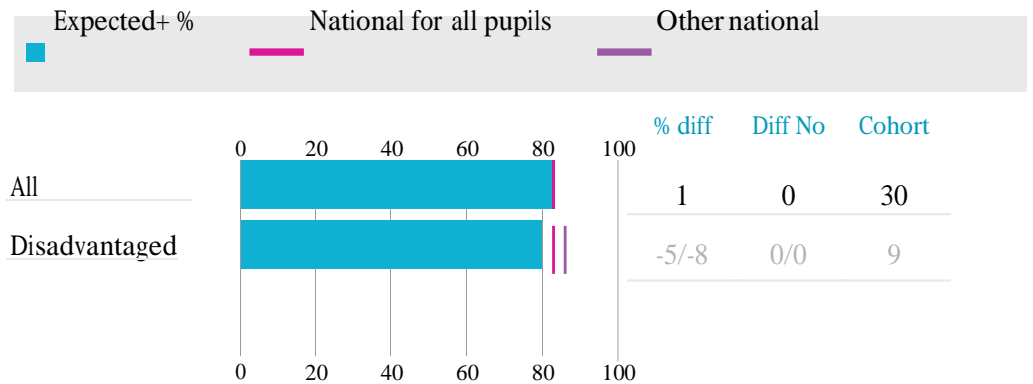
Writing



Mathematics



Science



Note: 'Diff no' value shows the number of pupils that the difference between school and national represents, and is always rounded down to a whole number. Disadvantaged nationals are shown as all/other (other relates to pupils who are not defined as disadvantaged). For science the only outcome of the teacher assessment was whether pupils met the expected standard. For further information on methodology see

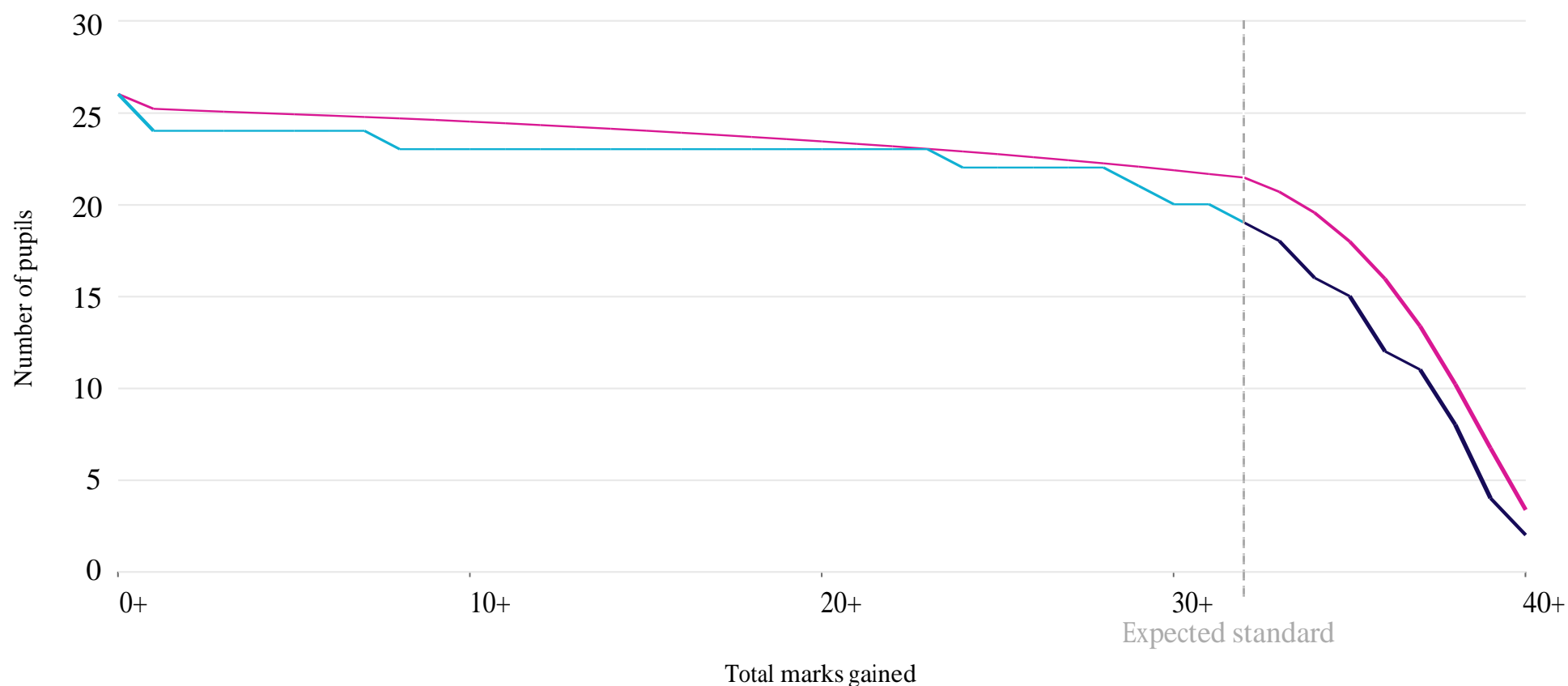
Year 1 phonics marks 2018

This chart shows the distribution of total marks achieved by pupils in the school compared to the national.

— National level — Not achieved expected standard — Achieved expected standard

Cohort = 26 One pupil relates to 3.8 percentage points.

In 2018, 73% of pupils achieved the expected standard, 9 percentage points below the national proportion. This difference was not statistically significant.



Notes: The plotted national line is the national phonics attainment percentage at each phonics mark multiplied by the whole school phonics attainment cohort. The expected standard for phonics is 32+. For further information on methodology see www.gov.uk/government/collections/using-ofsteds-inspection-dashboard